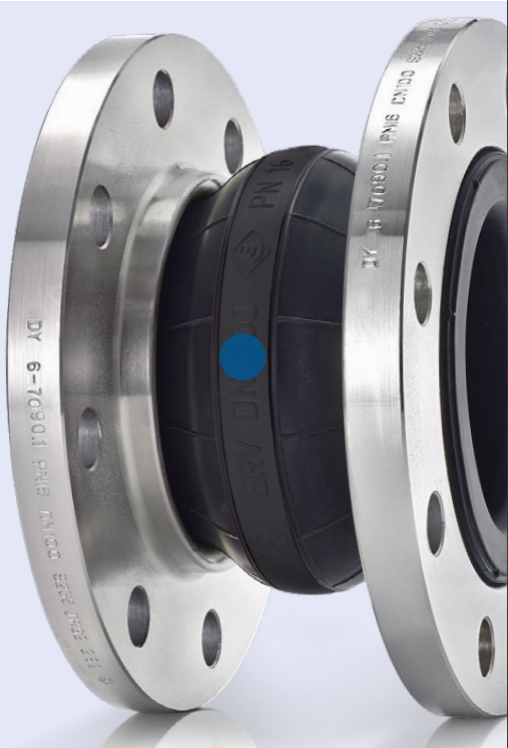


# ERV-BR

## High Grade Expansion Joint For Abrasive Media



Rubber expansion joints are used within pumping and piping systems to compensate movements, noise and vibrations.

For media containing abrasive components, ELAFLEX offers the special type **ERV-BR** made of a highly abrasion resistant rubber compound.

Suitable for sludges, slurries, solid/liquid mixtures or emulsions, and dustlike or powdery products.

Available in sizes DN 25-300.

E-Mail your enquiry to:  
[info@elaflex.de](mailto:info@elaflex.de)

Check out our configurator:  
[ervconfigurator.elaflex.de](http://ervconfigurator.elaflex.de)

**ELAFLEX**



ELAFLEX HIBY GmbH & Co. KG · ERV Sales Department  
Schnackenburgallee 121 · 22525 Hamburg, Germany  
Tel. +49 40 540 005-0 · [www.elaflex.com](http://www.elaflex.com)