

**Product badges** for **ZVA nozzles** display the selected fuel grade and help to prevent misfuelling. They are lightweight, easy to fit and do not disturb the slim shape of the nozzle.

They can also show your company colour, logo, or help to promote premium fuels.

Our **BadgeSelector** ([bagdeselector.elaflex.de](http://bagdeselector.elaflex.de)) is online available for **standard designs**. Additionally they can be selected from our catalogue page 512a. If the chosen design is available, small quantities can be supplied from stock.

**Individual artworks** need a minimum order of 50 pieces. Multicolour designs and photos are possible. Also, large quantities can be delivered with a short lead-time.

### BadgeCreator

**Customised product badges** can be uploaded with our BadgeCreator ([badgecreator.elaflex.de](http://badgecreator.elaflex.de)).

Professional files such as **AI** or **EPS** lead to best results, but pixel pictures with very good resolution are usable either. Upload your file, preview it and send the enquiry with a few clicks.

You will get an offer from ELAFLEX or one of our distributors in response.

### Design Hints

We recommend using strong colour contrasts and large lettering.

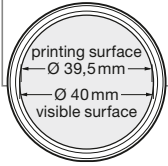
Best readability is achieved when using large, relatively dark coloured background surfaces with text in a contrasting colour.

Prevent large white surface areas due to accumulation of dirt.



## Benefits of the DirectPrint

Part Number	Process	Minimum Order Quantity	Approx. Delivery Time	Advantages	Artwork	Enquiry	Sample Pattern & Cost
<b>EK 145 / ...</b>  Design No. [ ... ] only in order confirmation and invoice	<b>DirectPrint</b>  Full colour print in one process and subsequent tempering.  Most 'Pantone C' colours can be met approximately.  No special colours like metallic possible.	<b>from 50 pcs.</b>  multiples (100, 150, 200...)	<b>1 to 2 weeks</b>	+ order quantity from 50  + short delivery time, high flexibility  + multi coloured designs or photos  + good to very good durability	<b>Ai or EPS</b> (TIF, BMP, JPEG, PNG, GIF)  For <b>Ai</b> (best format), convert fonts into paths and select 'Pantone C' or 'CMYK' colour.  Requirement: artwork must have sufficient print quality without the need to rework.	<a href="http://www.elaflex.de/BadgeSelector">www.elaflex.de/BadgeSelector</a> or <b>BadgeCreator</b>  Upload your artwork including colour definitions (always state the used colours, 'Pantone C' number or C-M-Y-K Euroscale values) and required amount.  Or send the data by E-Mail to our sales team.	Sample patterns on request, for order quantity above 500 pcs. free of charge.  If no sample pattern is ordered, no redemption due to colour variation.  Fixed blanket charge per design, independent from order quantity.  Unit cost depending on order quantity.



## Assembling

With a slot screwdriver punch holes into the four recessed slots of the nozzle scuffguard.

Position the spikes (legs) of the product badge on these slots and press the badge until it sits perfectly.

## Advantages Compared to Adhesive Stickers

Sometimes, stickers are used on blank white slogan badges.

On the face of it this can be an economic advantage, but practice has proven that stickers often are short-lived in the field. Due to fuel exposure, mechanical wear and weathering, they can come off or become unreadable by fading colours and scratching.

We also advise against slogan badges from third-party suppliers. These badges often do not have the suitable shape with their protection collar and often the spikes break off due to unsuitable material.

ELAFLEX recommends only using original printed product badges. We manufacture with suitable material specifications and guarantee the quality.

Samples are available from our sales team.

